

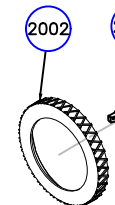
QTY	PART NUMBER	DESCRIPTION
1	2055	CENTERING BUSHING
1	2051-*	OUTER TUBE
1	2002	AIR CAP RING
1	2004	SEAL
2	2005	SNAP RING
1	2006	BARREL SPACER
1	2007	ROTARY BELL
3	2047S	BARREL SCREW
1	2008	BARREL GEAR
2	2009	BEARING
2	2010	SNAP RING
1	2011	BEARING SHIELD
1	302	TIP GASKET
1	2052-*	INNER FLUID TUBE <
1	306	FLUID TUBE INSERT
1	303	PACKING +
1	317	FLUID TUBE NUT
1	2012-HD	GUN BODY
1	2017-45	45 ADAPTOR
1	3175-62-18	1/2 ATOMIZING FITTING
1	315	LEATHER PACKING +
1	310	PACKING SCREW
1	319	PISTON +
1	305	O-RING +
1	2053-*	NEEDLE <
1	313	PISTON SPRING +
1	312-G	NEEDLE SPRING +
1	329	RATCHET
1	309	TRIGGER FITTING
1	2038-NS	PINION GEAR +
1	2036	SHAFT EXTENSION
2	2040	PINION GEAR PIN +
1	2037-NS	AIR MOTOR
2	2039	MOUNTING BOLTS
2	2042	AIR FITTING
1	2043	MUFFLER

+ = INCLUDED IN REBUILD KIT TSM-2024-NS

§ = SOLD AS TSM-2054-* SET ONLY

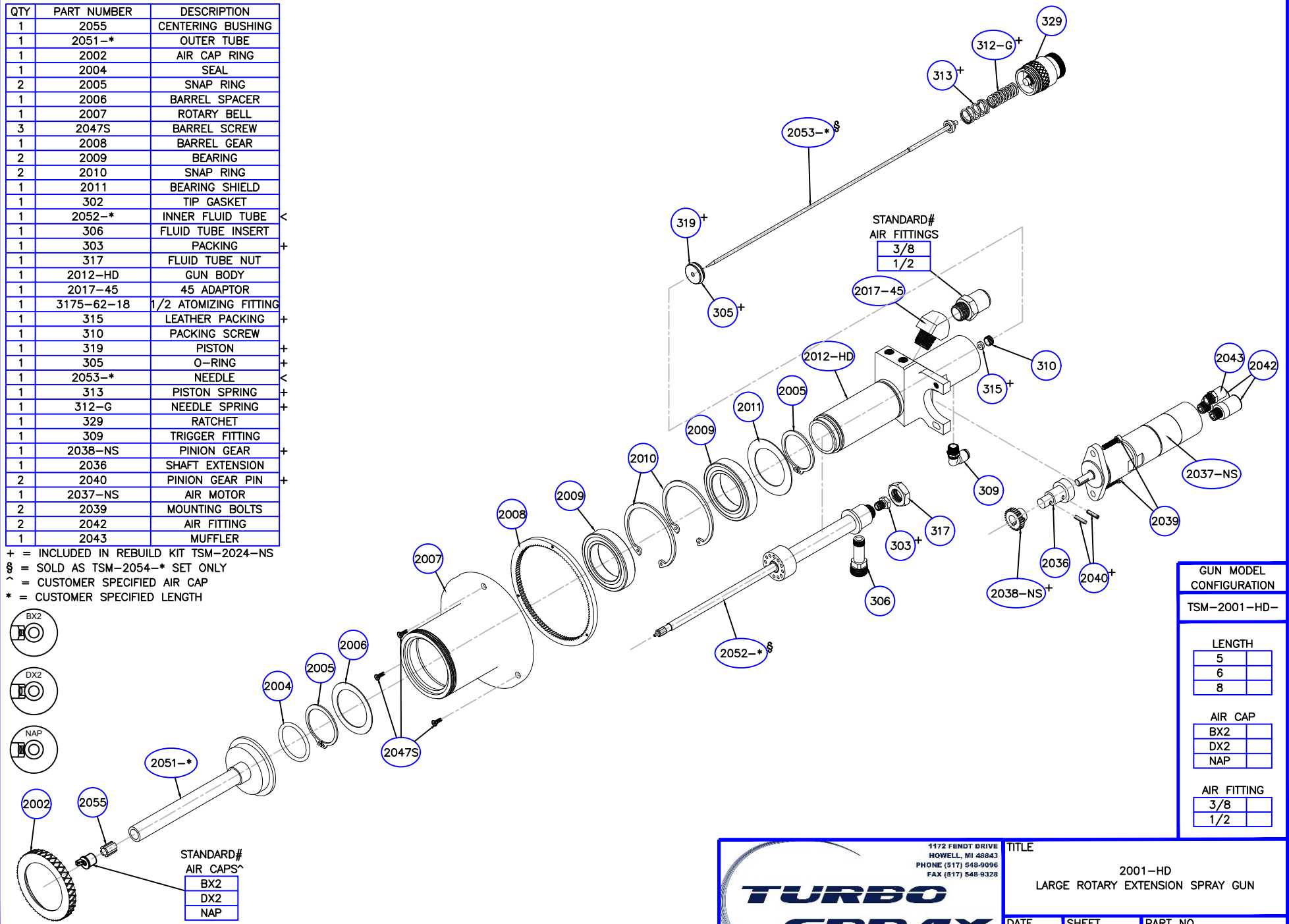
^ = CUSTOMER SPECIFIED AIR CAP

* = CUSTOMER SPECIFIED LENGTH



STANDARD#
AIR CAPS^

BX2
DX2
NAP



STANDARD#
AIR FITTINGS

3/8
1/2

GUN MODEL
CONFIGURATION

TSM-2001-HD-

LENGTH

5
6
8

AIR CAP

BX2
DX2
NAP

AIR FITTING

3/8
1/2

1172 FENDT DRIVE
HOWELL, MI 48843
PHONE (517) 548-9096
FAX (517) 548-9328

LEADERS IN LOW PRESSURE SINCE 1980!

TITLE 2001-HD LARGE ROTARY EXTENSION SPRAY GUN		
DATE 02/06/19	SHEET 1 OF 1	PART NO. 2001-HD
SCALE NONE	DRAWN BY JF	DRAWING NO. 2001-HDXTLAWN.DWG

= CONTACT FOR ADDITIONAL OPTIONS AVAILABLE