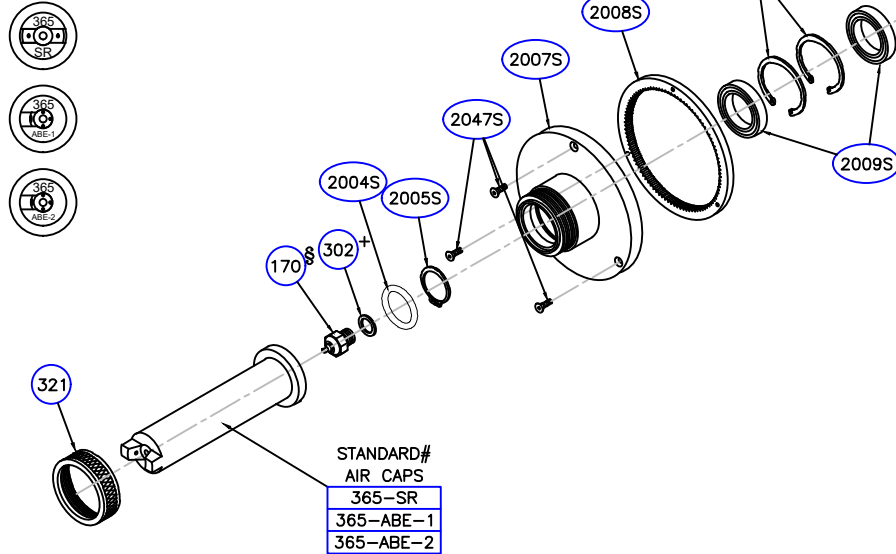
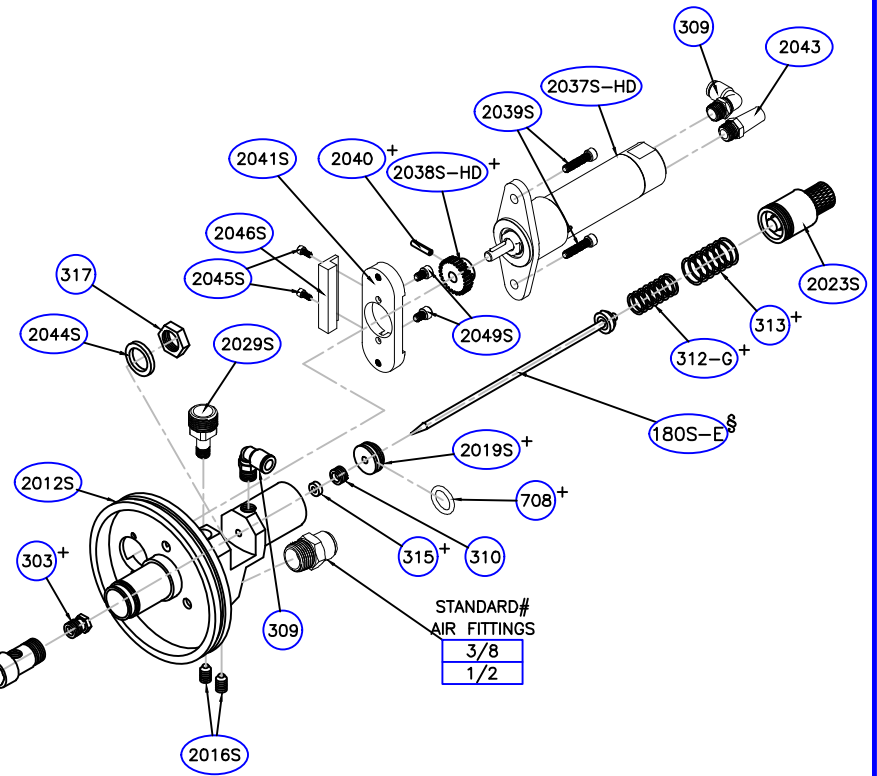


| QTY | PART NUMBER | DESCRIPTION |
|-----|-------------|---------------------|
| 1 | 321 | AIR CAP RING |
| 1 | 170 | 1.00MM FLUID TIP |
| 1 | 302 | TIP GASKET |
| 1 | 2004S | SEAL |
| 1 | 2005S | SNAP RING |
| 1 | 2007S | ROTARY BELL |
| 3 | 2047S | BARREL SCREW |
| 1 | 2008S | BARREL GEAR |
| 2 | 2009S | BEARING |
| 2 | 2010S | SNAP RING |
| 1 | 2028S | FLUID TUBE |
| 1 | 303 | PACKING |
| 1 | 2012S | GUN BODY |
| 1 | 2029S | FLUID TUBE INSERT |
| 1 | 2044S | WASHER |
| 1 | 317 | FLUID TUBE NUT |
| 1 | 315 | LEATHER PACKING |
| 1 | 310 | PACKING SCREW |
| 1 | 708 | O-RING |
| 1 | 2019S | PISTON |
| 1 | 180S-E | EXTENSION NEEDLE |
| 1 | 312-G | NEEDLE SPRING |
| 1 | 313 | PISTON SPRING |
| 1 | 2023S | RATCHET |
| 1 | 2041S | MOTOR MOUNT ADAPTER |
| 2 | 2049S | MOUNTING SCREWS |
| 1 | 2038S-HD | PINION GEAR |
| 1 | 2037S-HD | AIR MOTOR |
| 1 | 2040 | PINION GEAR PIN |
| 1 | 2043 | MUFFLER |
| 2 | 309 | AIR FITTING |
| 1 | 2046S | GUARD |
| 2 | 2045S | MOUNTING SCREWS |
| 2 | 2016S | SET SCREWS |

+ = INCLUDED IN REBUILD KIT TSM-2024-S-1-HD
 § = SOLD AS TSM-185-E SET ONLY



| STANDARD# | AIR CAPS |
|-----------|----------|
| 365-SR | |
| 365-ABE-1 | |
| 365-ABE-2 | |



| STANDARD# | AIR FITTINGS |
|-----------|--------------|
| 3/8 | |
| 1/2 | |

| GUN MODEL CONFIGURATION | |
|-------------------------|--------------------------|
| TSM-2001S-EXT- | |
| AIR CAP | |
| 365-SR | <input type="checkbox"/> |
| 365-ABE-1 | <input type="checkbox"/> |
| 365-ABE-2 | <input type="checkbox"/> |
| AIR FITTING | |
| 3/8 | <input type="checkbox"/> |
| 1/2 | <input type="checkbox"/> |

1172 FENDT DRIVE
 HOWELL, MI 48843
 PHONE (517) 548-9096
 FAX (517) 548-9328

TURBO SPRAY

LEADERS IN LOW PRESSURE SINCE 1980!

| TITLE | | |
|---|----------|-------------------|
| 2001S-EXT SMALL ROTARY EXTENSION SPRAY GUN | | |
| DATE | SHEET | PART NO. |
| 02/06/19 | 1 OF 1 | 2001S-EXT |
| SCALE | DRAWN BY | DRAWING NO. |
| NONE | JF | 2001S-EXTLAWN.DWG |

= CONTACT FOR ADDITIONAL OPTIONS AVAILABLE