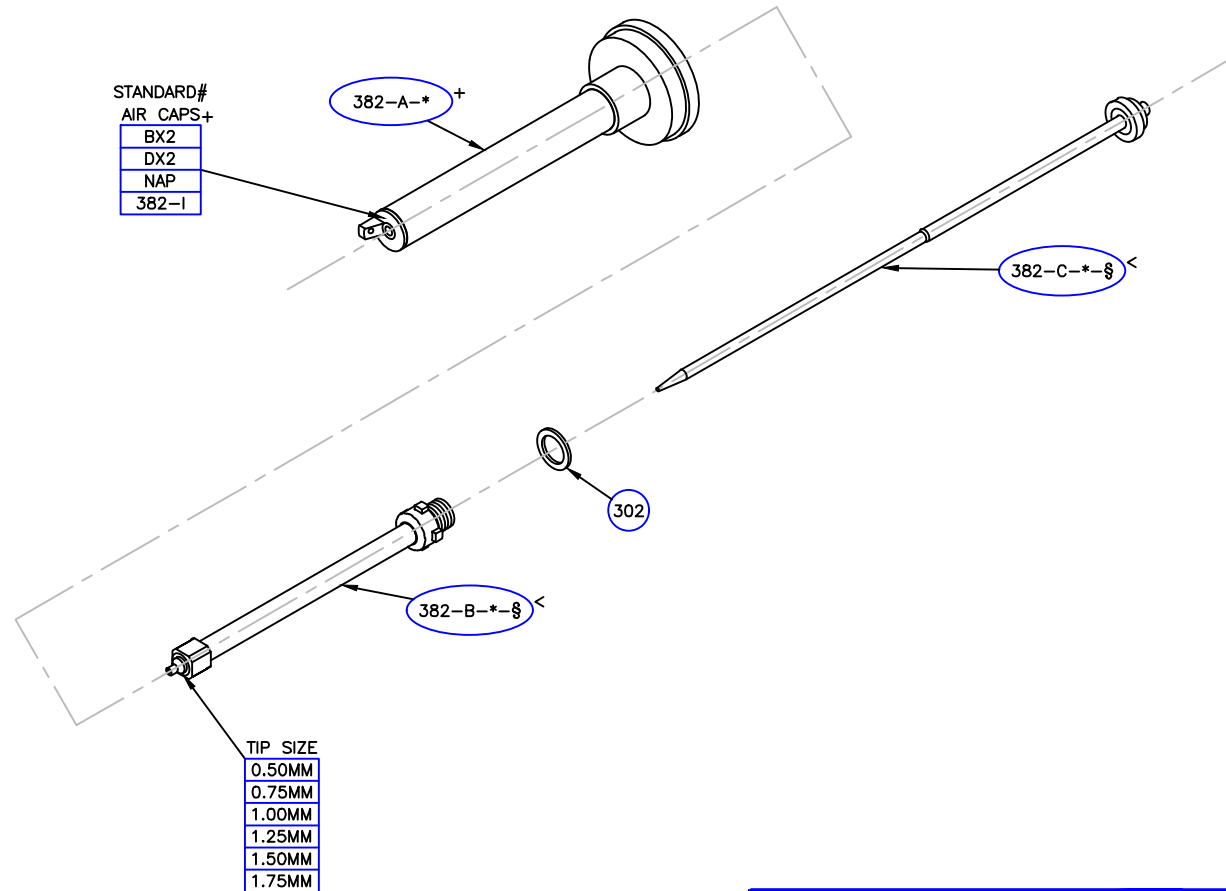
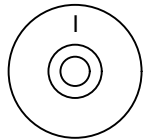
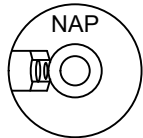
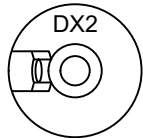
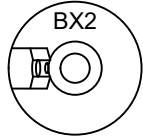


QTY	PART NUMBER	DESCRIPTION
1	382-A-*	OUTER TUBE +
1	382-B-*-*§	INNER FLUID TUBE <
1	382-C-*-*§	NEEDLE <
1	302	TIP GASKET <

< = SOLD AS SET ONLY (TSM-382-D-*-*§)

+ = INCLUDED IN TSM-382-A-* ASSEMBLY



EXTENSION MODEL CONFIGURATION

TSM-382-

LENGTH

2	
3	
4	
6	
8	
11	
15	

TIP AND NEEDLE SIZE

0.50	
0.75	
1.00	
1.25	
1.50	
1.75	

AIR CAP

BX2	
DX2	
NAP	
I	

1172 FENDT DRIVE
HOWELL, MI 48843
PHONE (517) 548-9096
FAX (517) 548-9328

LEADERS IN LOW PRESSURE SINCE 1980!

TITLE		
382 1/2" DIAMETER EXTENSION KIT		

DATE	SHEET	PART NO.
02/07/19	1 OF 1	382
SCALE	DRAWN BY	DRAWING NO.
NONE	JF	382EXTLAWN.DWG

= CONTACT FOR ADDITIONAL OPTIONS AVAILABLE