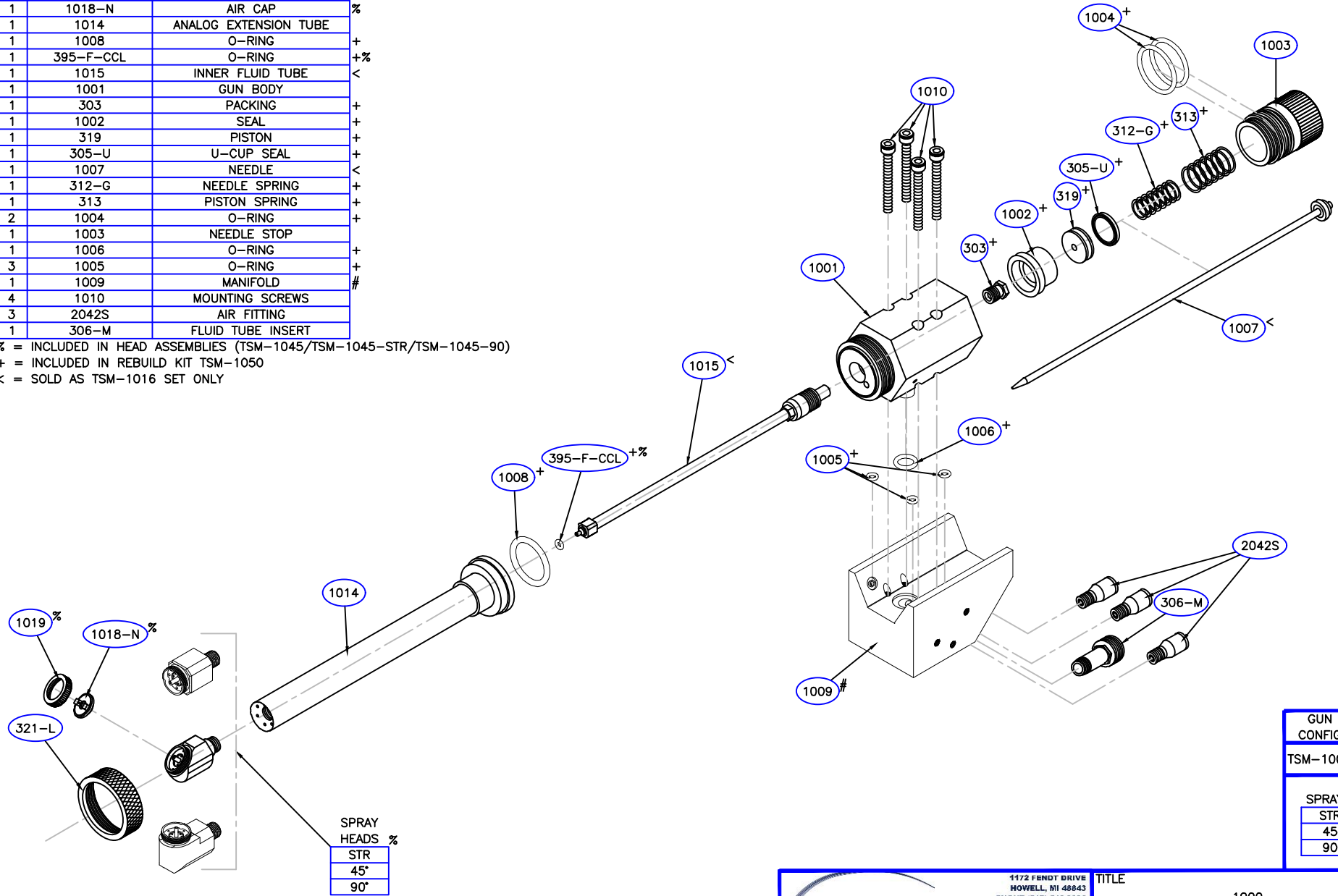


QTY	PART NUMBER	DESCRIPTION
1	321-L	AIR CAP LOCKING RING
1	1019	AIR CAP LOCKING RING
1	1018-N	AIR CAP
1	1014	ANALOG EXTENSION TUBE
1	1008	O-RING
1	395-F-CCL	O-RING
1	1015	INNER FLUID TUBE
1	1001	GUN BODY
1	303	PACKING
1	1002	SEAL
1	319	PISTON
1	305-U	U-CUP SEAL
1	1007	NEEDLE
1	312-G	NEEDLE SPRING
1	313	PISTON SPRING
2	1004	O-RING
1	1003	NEEDLE STOP
1	1006	O-RING
3	1005	O-RING
1	1009	MANIFOLD
4	1010	MOUNTING SCREWS
3	2042S	AIR FITTING
1	306-M	FLUID TUBE INSERT

% = INCLUDED IN HEAD ASSEMBLIES (TSM-1045/TSM-1045-STR/TSM-1045-90)
 + = INCLUDED IN REBUILD KIT TSM-1050
 < = SOLD AS TSM-1016 SET ONLY



= CONTACT FOR ADDITIONAL OPTIONS AVAILABLE

1172 FENDT DRIVE
 HOWELL, MI 48843
 PHONE (517) 548-9096
 FAX (517) 548-9328

**TURBO
 SPRAY**

LEADERS IN LOW PRESSURE SINCE 1980!

TITLE		
1000 AUTOMATIC ANALOG MANIFOLD SPRAY GUN WITH 1017 ANALOG EXTENSION		
DATE	SHEET	PART NO.
02/06/19	1 OF 1	1000-1017
SCALE	DRAWN BY	DRAWING NO.
NONE	JF	1000-1017LAWN.DWG

GUN MODEL CONFIGURATION	
TSM-1000-1017-	
SPRAY HEAD	
STR	
45	
90	