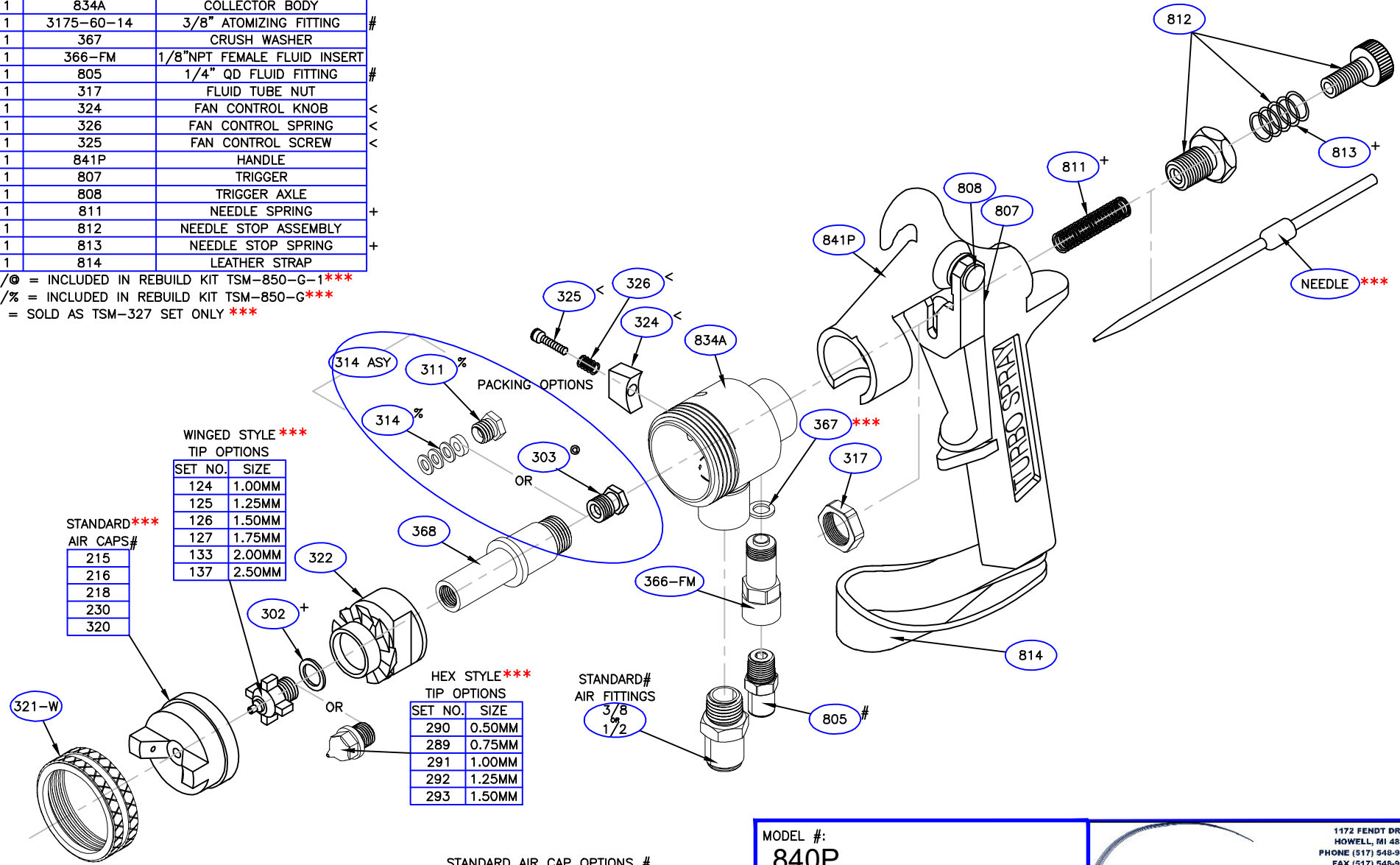


QTY	PART NUMBER	DESCRIPTION
1	321-W	AIR CAP LOCKING RING
1	302	TIP GASKET
1	322	DISTRIBUTOR
1	368	FLUID TUBE
1	834A	COLLECTOR BODY
1	3175-60-14	3/8" ATOMIZING FITTING
1	367	CRUSH WASHER
1	366-FM	1/8"NPT FEMALE FLUID INSERT
1	805	1/4" QD FLUID FITTING
1	317	FLUID TUBE NUT
1	324	FAN CONTROL KNOB
1	326	FAN CONTROL SPRING
1	325	FAN CONTROL SCREW
1	841P	HANDLE
1	807	TRIGGER
1	808	TRIGGER AXLE
1	811	NEEDLE SPRING
1	812	NEEDLE STOP ASSEMBLY
1	813	NEEDLE STOP SPRING
1	814	LEATHER STRAP

+/@ = INCLUDED IN REBUILD KIT TSM-850-G-1***
 +/% = INCLUDED IN REBUILD KIT TSM-850-C***
 < = SOLD AS TSM-327 SET ONLY ***



WINGED STYLE ***
TIP OPTIONS

SET NO.	SIZE
124	1.00MM
125	1.25MM
126	1.50MM
127	1.75MM
133	2.00MM
137	2.50MM

STANDARD ***
AIR CAPS #

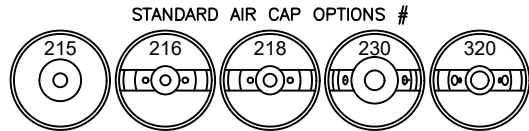
215
216
218
230
320

HEX STYLE ***
TIP OPTIONS

SET NO.	SIZE
290	0.50MM
289	0.75MM
291	1.00MM
292	1.25MM
293	1.50MM

STANDARD #
AIR FITTINGS

3/8
1/2



*** = RECOMMENDED SPARE PARTS TO PREVENT DOWN TIME
 # = CONTACT FOR ADDITIONAL OPTIONS AVAILABLE

MODEL #: **840P**

ORDERS/PRICING:
 (517) 548-9096
 ORDERS@TURBOSPRAY.COM

1172 FENDT DRIVE
 HOWELL, MI 48843
 PHONE (517) 548-9096
 FAX (517) 548-9328

**TURBO
 SPRAY**

LEADERS IN LOW PRESSURE SINCE 1980!